

AF5 POD

Most often seen in southeastern Alaska; rare in Kenai Fjords/PWS

AF 5 (<1970)
Chatham



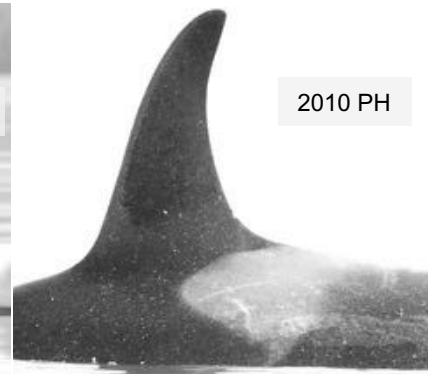
AF 12 (1983)
Lazaria



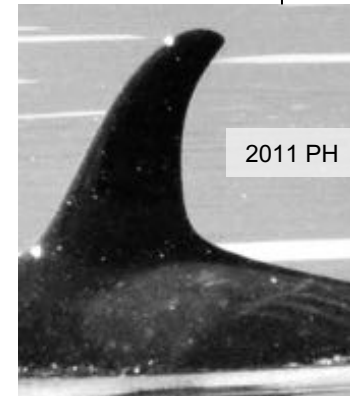
AF 37 (1993)
Tenakee



AF 79 (est 2001)



AF 88 (2009-10) Ojos



AF 52 (1998) Stickeen



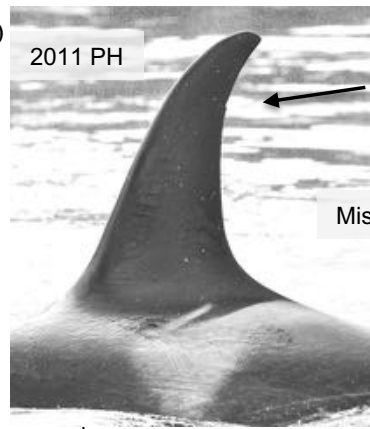
AF 76 (2004) Luca



AF5 POD

AF 15 (est 1970)
Link

*Most often seen in southeastern
Alaska; rare in Kenai Fjords/PWS*



To AF23, possible daughter of AF15

AF 57 (1999) *Wavelet*



AF 81 (2005) *Bieli*



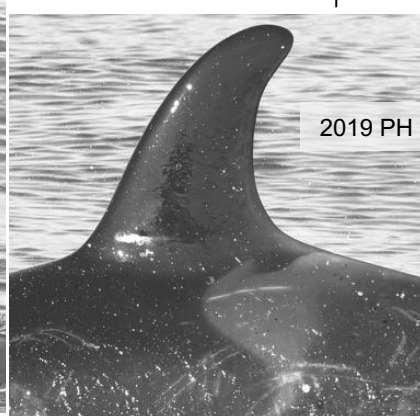
AF 34 (1992) *Granite*



AF 100 (2012) *Iyoukeen*



AF 112 *Buldir* (est 2017)



AF 109 *Chia* (2019)



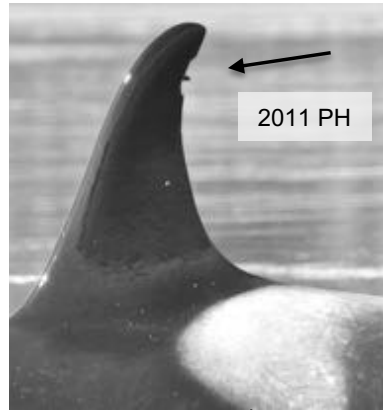
AF5 POD

Most often seen in southeastern Alaska; rare in Kenai Fjords/PWS

AF15 (1966)
*Photo on previous page
Missing?*

To other offspring of AF15

AF 23 (est 1983) *Squaretop*



AF 49 (1996) *Endicott*



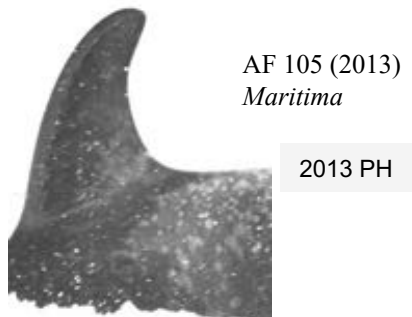
AF 59 (2000) *Comber*



AF 95 (2009) *Thuy*



AF 105 (2013)
Maritima



AF5 POD

Most often seen in southeastern Alaska; rare in Kenai Fjords/PWS



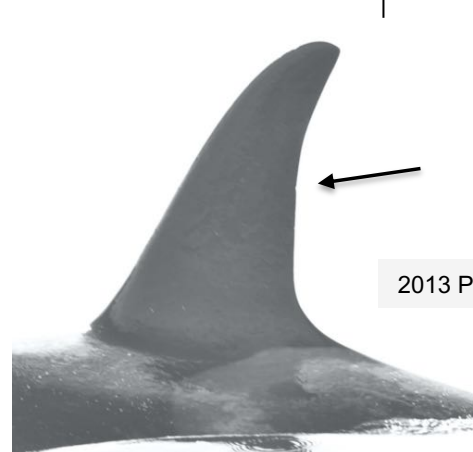
AF 20 (est 1969)
Secret

To other offspring of AF20

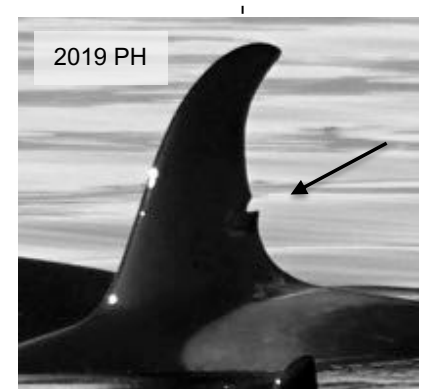
AF 51 (1993) *Iola*



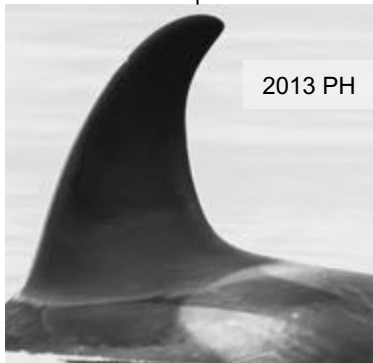
AF 78 (2003) *Oakura*



AF 115 (est 2010)



AF 101 (2009)
Amala



2014 PH



AF 108 (2014)
Rainy

Possible calf to AF 51
(est 2017)

AF5 POD

Most often seen in southeastern Alaska; rare in Kenai Fjords/PWS

AF20 (est 1969)
Photo previous page

To other offspring of AF20

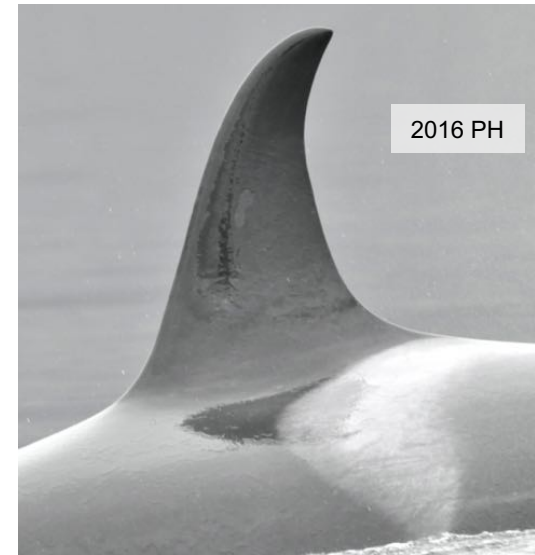
AF 14 (est 1982) *Johnny T.*



AF 31 (1987) *Althorp*



AF 35 (1990) *Ruhamah*

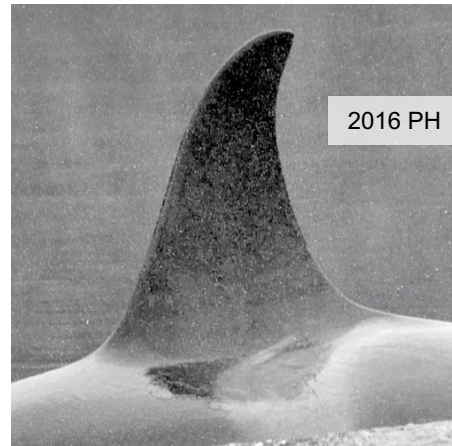


AF 96 (2006) *Abuelita*



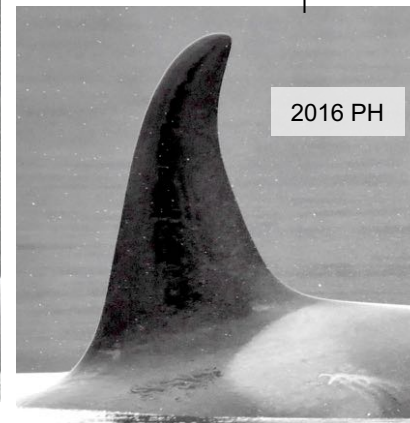
AF 75 (2002)
Zara

2004 PH



2016 PH

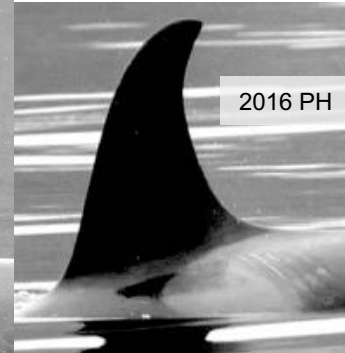
AF 106 (2009-2010)



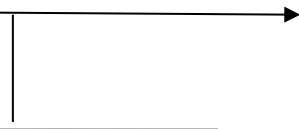
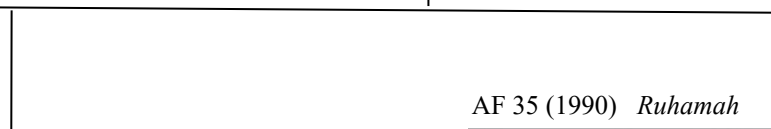
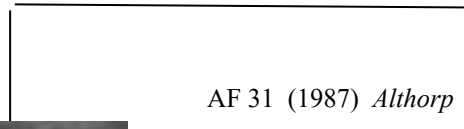
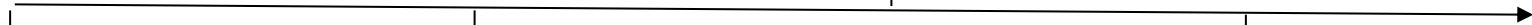
2016 PH

Lol

AF 107 (2013)



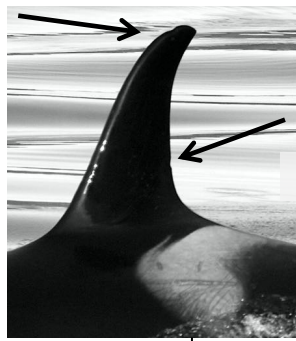
2016 PH



AF5 POD

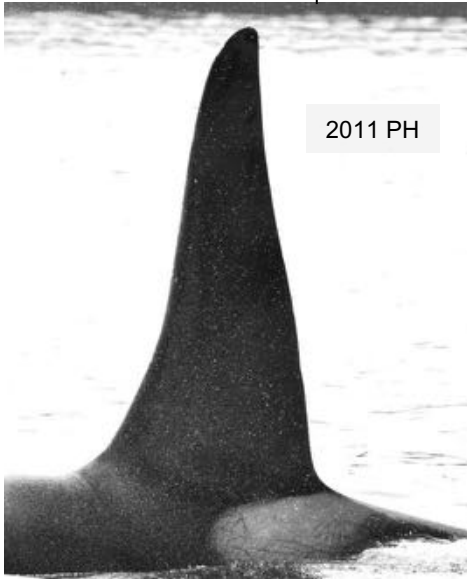
AF 13 (est 1958)
Couwerden

*Most often seen in southeastern
Alaska; rare in Kenai Fjords/PWS*



2013 PH

AF 18 (1969)
Frederick



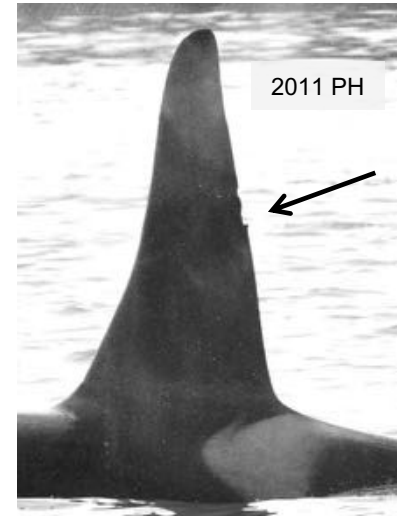
2011 PH

AF 17 (1980) *Coho*



2011 PH

AF 42 (1993) *Nipper*



2011 PH

AF 61 (2001) *Snippet*



2019 PH

AF 82 (2005-06)

Diki Tsering



2019 PH

AF 94 (2010)



2011 PH

AF 110 *Amak* (est 2017)



2019 PH

AF 113 *Violet* (est 2014)



2019 PH

AF 111 *Gareloi* (est 2019)



2019 PH

AF5 POD

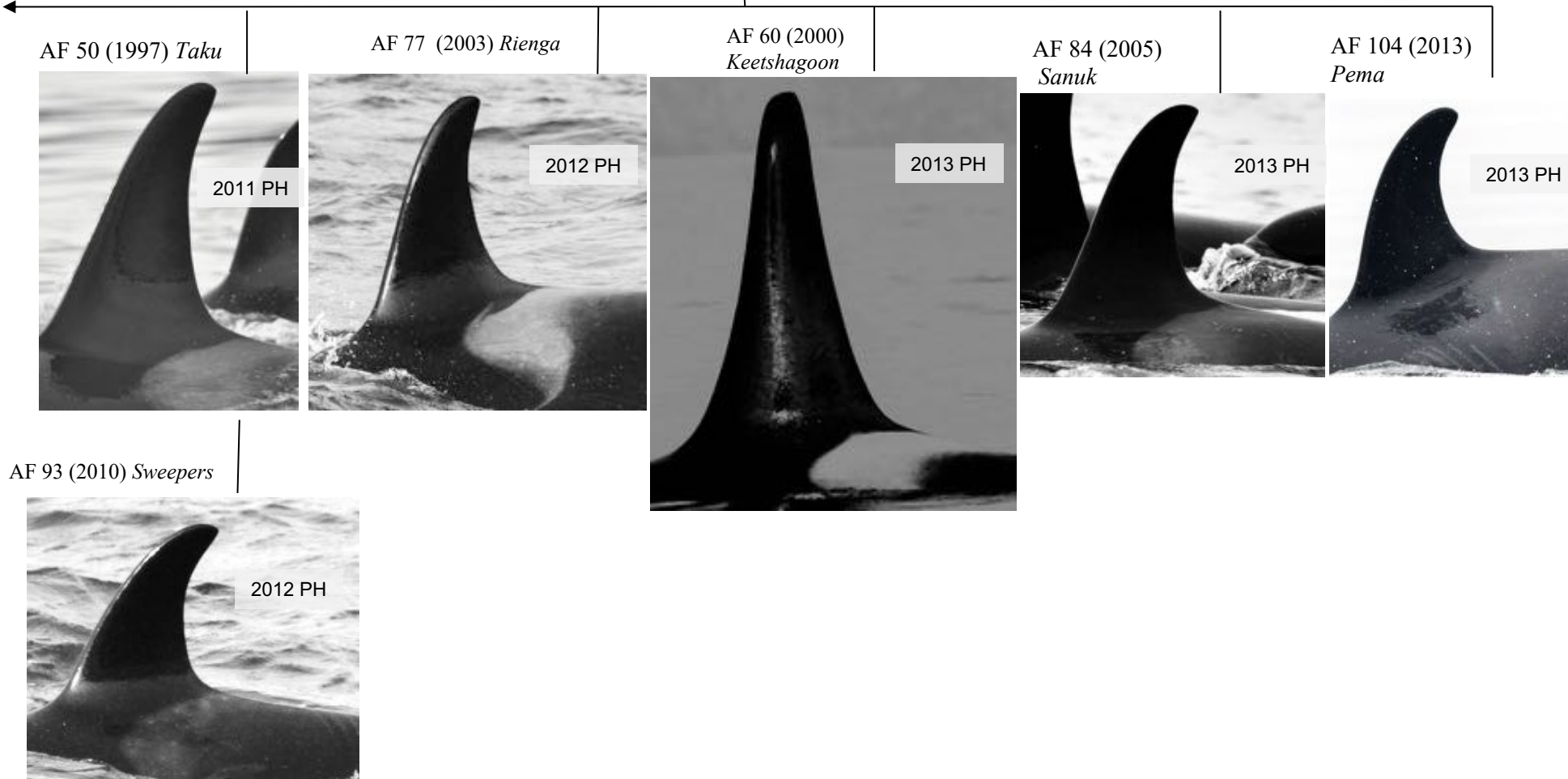
Most often seen in southeastern Alaska; rare in Kenai Fjords/PWS

AF 11 (est 1970)
Gambier

1997 PH



To other offspring of AF11



AF5 POD

Most often seen in southeastern Alaska; rare in Kenai Fjords/PWS

AF 25 (1983)
Laguna

Possible offspring
of AF11

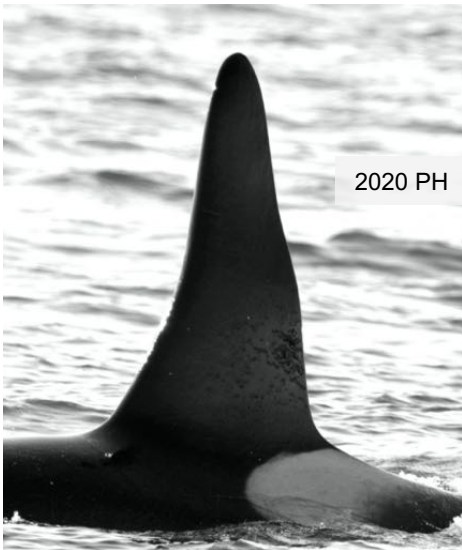


AF 33 (1988)
Storm



To mother AF11, siblings AF50 and others

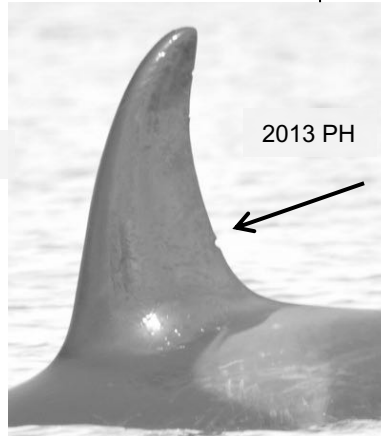
AF 41 (1995) *Cenotaph*



AF 58 (2000) *Shaawat*



AF 74 (2003) *Symphony*



AF 83 (2005) *Peligrosa*



AF 92 (2011) *Shadow*

